

THE ROSALYN YALOW CHARTER SCHOOL

116 East 169th Street • Bronx, New York, 10452
• Phone: 347.735.5480 • info@yalowcharter.org
Web: www.yalowcharter.org

Board of Trustees Meeting Minutes

Tuesday, March 20, 2018, 6:30 p.m.
116th East 169th Street
Bronx, New York 10463

Trustees Present

John Carr, Sandra Hayes, Ben Yalow, Miguel Balbuena, Gregoria Feliciano and Shirley Saunders, Michael Rosen via Skype. Alec Diacou, executive director, Donna Friedman via phone, Letta Belle, principal, Yvonne Booker-Byers, director of assessment, Shannon Burton, dean of instruction, Donald Mabrey, dean of students, and Collin Raymond, CSBM were also in attendance.

Call to Order

The meeting was called to order at 6:35 p.m.

Adoption of Agenda

Upon a motion duly made, and seconded, the agenda was unanimously approved.

Approval of Minutes

Upon a motion duly made and seconded, the minutes of the meeting held on February 20, 2018, with certain changes requested by members of the board, were unanimously approved.

Finance Report (Collin Raymond, CSBM, Michael Rosen)

Significant deviations from the approved FY17-18 budget fall into four categories: special education revenue, federal grant revenue, legal expense, and personnel (hiring delays). Forecast General education revenue will be slightly under budget, (c. \$61.4k); special education revenues will be over budget by \$215k; Federal grants will be over budget by \$156.4k; Cash contributions are under budget by (\$50k). \$5,600 raised for the chess team's trip to compete in NYS Scholastic Chess Championships (\$3,000 from the Wallace Foundation; \$1,220 the parent association at two fundraising events; and \$1,150 from several individuals. Non-cash contributions of books, computers, and furniture of \$50k from Ethical Culture Fieldston School were received.

Currently we have 59.5 FTE employees versus forecast of 61.5, resulting in employee expenses running \$652k under budget, and total expenses under budget by (\$585k). Legal expenses are over budget by \$38.6k due to legal consultations related to the union vote, and may end the year over budget by (c. \$81k) for on-going lease negotiations.

8-month net income is forecast at \$1,053,000, \$893k greater than the \$160k forecast in Yalow's budget. Yalow c. \$3.3 million in the bank as of February 28, and expect to end the fiscal year with c. \$2.3 million after two lease deposits for two campus locations.

Review of Student Assessment Data

The board reviewed the STEP/NWEA Growth Data Report for Winter 2018 (attachment A). Overall, following Cycle 1 testing (ending March 11 2018), 65% of students tested below grade level in STEP Literacy; 41% in kindergarten; 69% in 1st grade; 71% in 2nd grade; and 82% in 3rd grade. 31% of students showed no growth; 27% in kindergarten; 39% in 1st grade; 27% in 2nd grade; and 34% in 3rd grade. Math results were better, with approximately 41% of students meeting growth targets.

Attendance Report

Student attendance and absentee report summaries as of March 15, 2018 were presented (attachment B). 67 students are chronic absentees (18%); 37 students have perfect attendance (10%); 78 students have more than 10 days of early dismissals/late arrivals (21%).

Hiring Update

Two teacher-social worker positions remain unfilled. A non-social worker will substitute for one of these teaching positions.

New Business—Proposal for Yalow Charter School's Therapeutic Component

John Carr presented an overview of his discussions with Donna Friedman, executive director of Mosaic Mental Health and shared an outline of the Strategic Study and Plan of Action for optimizing the role of teacher-social workers in K-2 classrooms, which Mosaic is preparing for Yalow, with an estimated delivery date of June 1, 2018. Mosaic's team will coordinate their work with principal Belle.

Following conversations between the board and NYSED during NYSED's Site Visit on March 13, 2018, Mr. Carr suggested scheduling a board retreat and professional development for board members, and offered to reach out to the NYC Charter School Center for recommendations. Board members were polled and agreed to schedule a board retreat on Saturday, April 21, 2018.

Letta Belle was asked to work with Miguel Balbuena to develop a data dashboard for board meetings, including student performance and teacher feedback.

Public Comment – None.

Adjournment – 9:06 p.m.

Approved by the Board of Trustees on
August 21, 2018

Attachment A

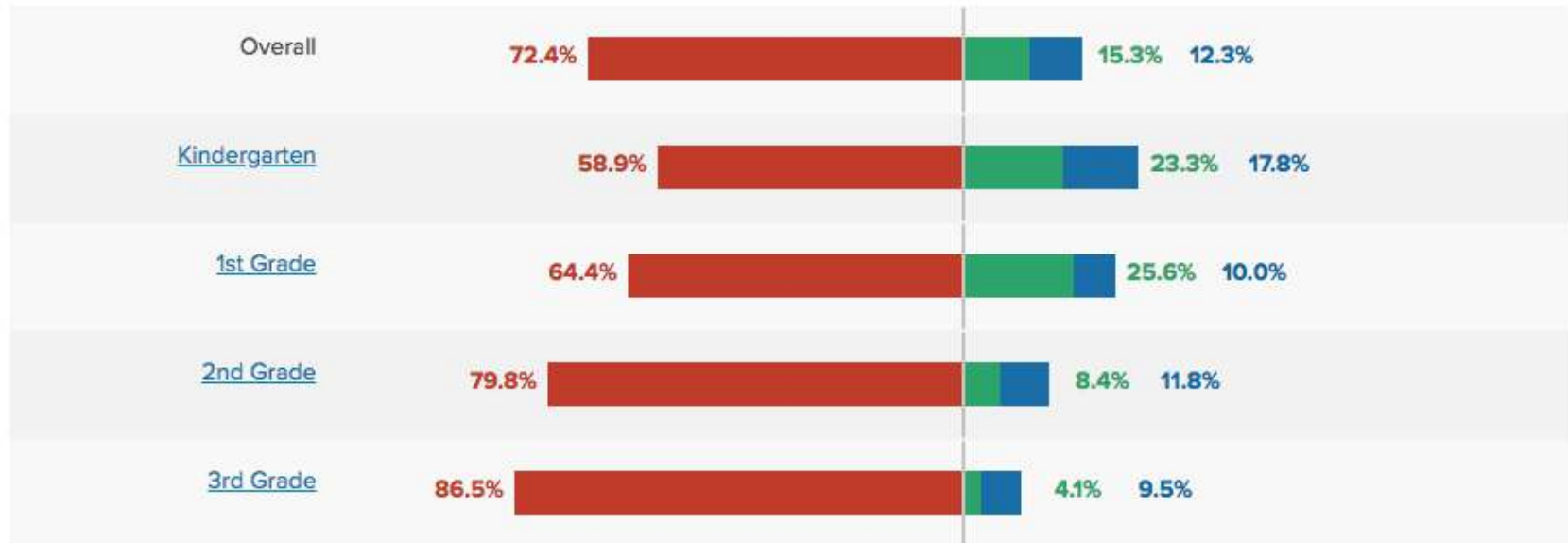
STEP/NWEA GROWTH DATA
WINTER 2018

Student Performance by Grade 2017-2018

Baseline Round

Yalow Charter has completed  94% of the assessments for the period ending January 1, 2018. [See status details.](#)

Legend  Below Target  On Target  Above Target



- Cycle 1

[↑ Rosalyn Yalow Charter School - Bronx, NY Performance](#)

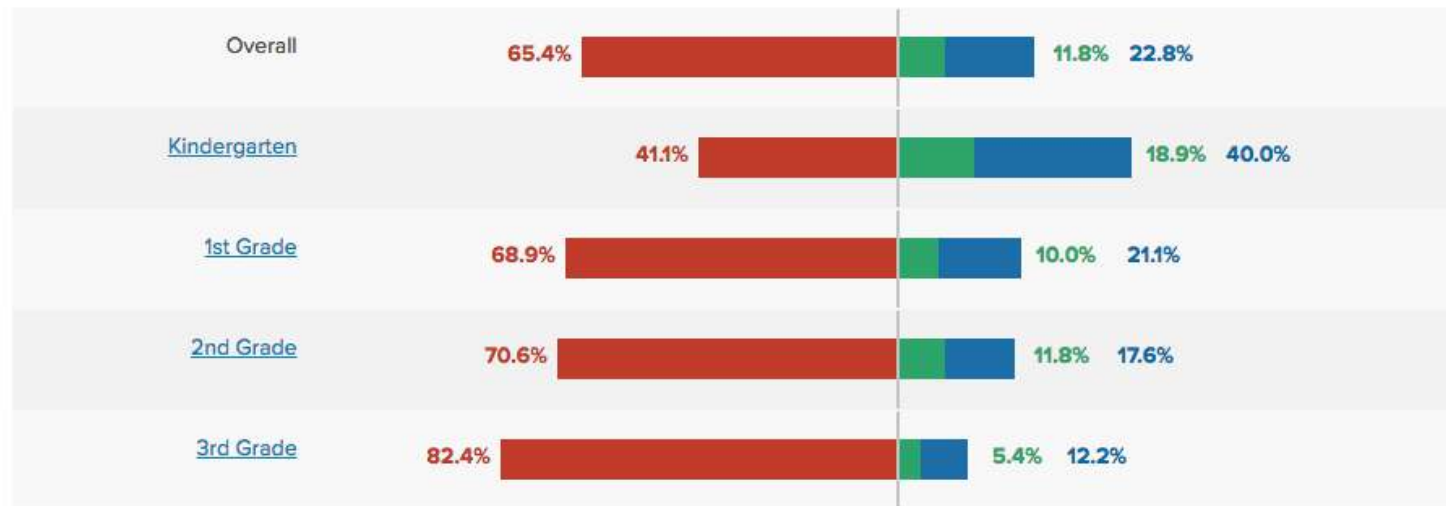
Performance Summary

Show performance for **Purple/Yellow**

Show performance data by **Grade** Classroom Group through the end of Cycle 1 (March 11, 2018)

Yalow Charter has completed **100%** of the assessments for the period ending March 11, 2018. [See status details.](#)

Legend ■ Below Target ■ On Target ■ Above Target

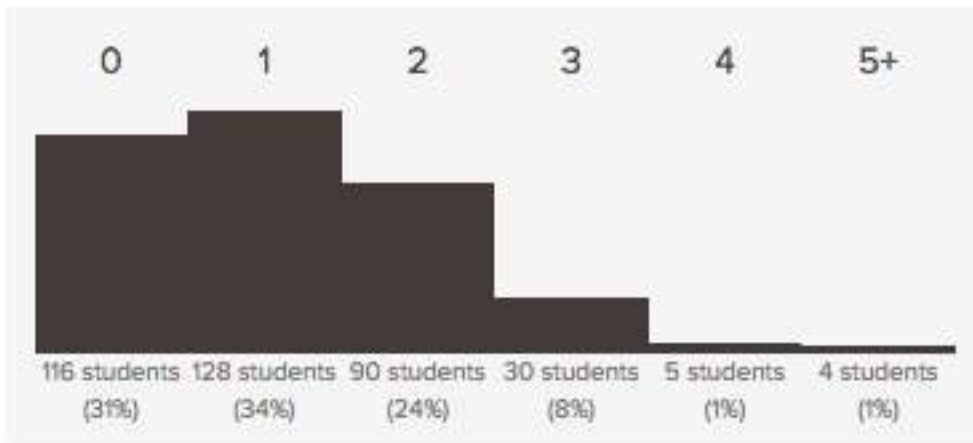


The data for this view was last updated at 3:15 p.m. on March 8, 2018. When underlying student assessment data is added or modified, the data for this view will be updated automatically (usually within a day).

Student Growth by Grade 2017-2018

Overall Student Growth

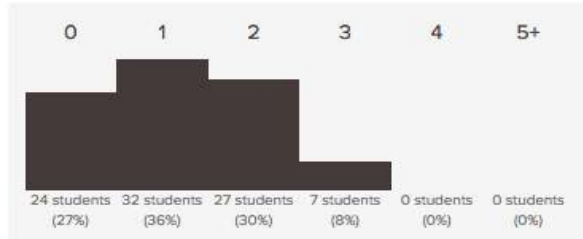
This histogram shows the growth of all students, as measured by the number of Step level gains for each student during the current year through the end of Cycle 1 (March 11, 2018).



Growth of all students through March 11, 2018.

The following histograms show student growth for specific grades. For a closer look, growth reports are available that focus on individual grade and classrooms.

Kindergarten Student Growth



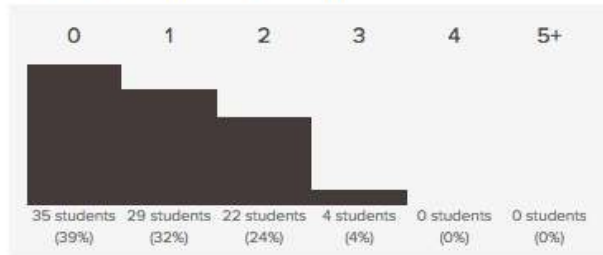
Growth of Kindergarten students through March 11, 2018.

Expected growth for Kindergarten students is 1 Step levels. The target for these students by the end of Cycle 1 is STEP 1.

Of these 90 students:

- 34 students (38%) grew more than 1 step, exceeding expected progress growth.
- 32 students (36%) grew exactly 1 step, meeting expected progress growth.
- 24 students (27%) grew less than 1 step, trailing expected progress growth.

1st Grade Student Growth



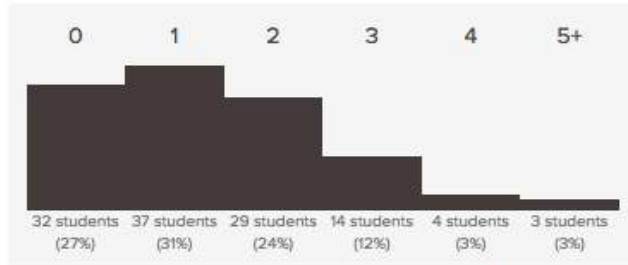
Growth of 1st Grade students through March 11, 2018.

Expected growth for 1st Grade students is 1 Step levels. The target for these students by the end of Cycle 1 is STEP 4.

Of these 90 students:

- 26 students (29%) grew more than 1 step, exceeding expected progress growth.
- 29 students (32%) grew exactly 1 step, meeting expected progress growth.
- 35 students (39%) grew less than 1 step, trailing expected progress growth.

2nd Grade Student Growth



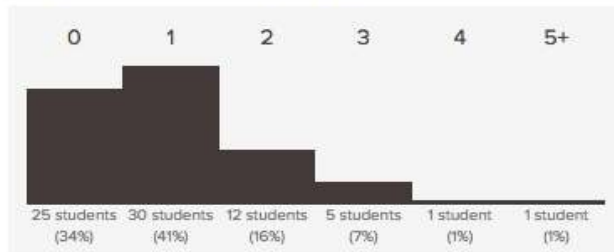
Growth of 2nd Grade students through March 11, 2018.

Expected growth for 2nd Grade students is 1 Step levels. The target for these students by the end of Cycle 1 is STEP 7.

Of these 119 students:

- 50 students (42%) grew more than 1 step, exceeding expected progress growth.
- 37 students (31%) grew exactly 1 step, meeting expected progress growth.
- 32 students (27%) grew less than 1 step, trailing expected progress growth.

3rd Grade Student Growth



Growth of 3rd Grade students through March 11, 2018.

Expected growth for 3rd Grade students is 1 Step levels. The target for these students by the end of Cycle 1 is STEP 10.

Of these 74 students:

- 19 students (26%) grew more than 1 step, exceeding expected progress growth.
- 30 students (41%) grew exactly 1 step, meeting expected progress growth.
- 25 students (34%) grew less than 1 step, trailing expected progress growth.

NWEA STUDENT GROWTH SUMMARY

WINTER 2018



Student Growth Summary Report

Aggregate by School

Term: Winter 2017-2018
District: Rosalyn Yalow Charter School

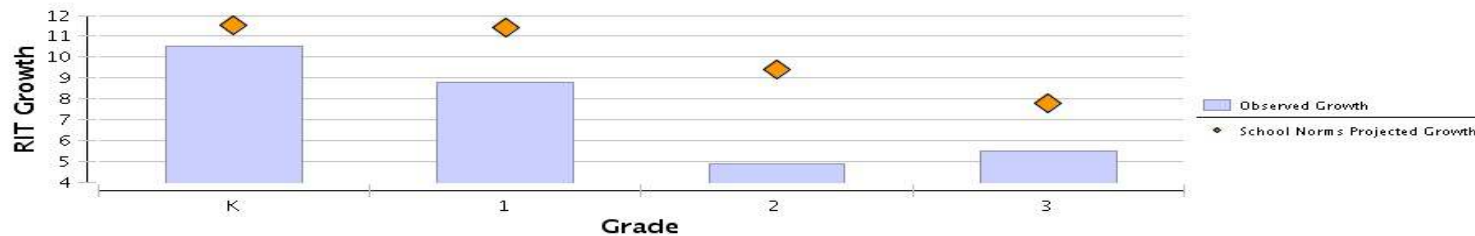
Norms Reference Data: 2015 Norms
Growth Comparison Period: Fall 2017 - Winter 2018
Weeks of Instruction: Start - 4 (Fall 2017)
End - 20 (Winter 2018)
Grouping: None
Small Group Display: No

Rosalyn Yalow Charter School

Mathematics

Grade (Winter 2018)	Growth Count‡	Comparison Periods						Growth Evaluated Against								
		Fall 2017			Winter 2018			Growth		School Norms			Student Norms			
		Mean RIT	SD	Percentile	Mean RIT	SD	Percentile	Observed Growth	Observed Growth SE	Projected Growth	School Conditional Growth Index	School Conditional Growth Percentile	Count with Projection	Count Met Projection	Percent Met Projection	Student Median Conditional Growth Percentile
K	89	139.5	10.5	47	150.0	13.7	41	10.5	1.1	11.5	-0.62	27	89	41	46	43
1	86	162.0	13.1	47	170.7	14.1	30	8.8	0.9	11.4	-1.61	5	86	37	43	35
2	112	188.1	13.8	97	193.0	15.9	87	4.9	0.9	9.4	-2.96	1	112	44	39	30
3	73	191.2	9.3	55	196.6	9.5	40	5.5	0.7	7.8	-1.93	3	73	29	40	35

Mathematics



Explanatory Notes

‡Growth Count provided reflects students with MAP results in both the Start and End terms. Observed Growth calculation is based on that student data.

Generated 2/22/18, 2:35:54 PM

© NWEA 2018. MAP is a registered trademark. NWEA, MAP Growth and MAP Skills are trademarks of NWEA in the U.S. and in other countries.
© Copyright 2010. National Governors Association Center for Best Practices and Council of Chief State School Officers. All rights reserved.

Page 1 of 1



NWEA DISTRICT SUMMARY REPORT

Winter 2018



District Summary Report

Aggregate by School

Term: Fall 2017-2018
 District: Rosalyn Yalow Charter School
 Grouping: None
 Small Group Display: No

Mathematics

Rosalyn Yalow Charter School

Growth: Math 2-5 CCSS 2010 V2

Common Core State Standards Mathematics: 2010

Goal Performance

Term	Grade	Student Count	Mean RIT	Std Dev	Median	Operations and Algebraic Thinking		Number and Operations		Measurement and Data		Geometry	
						Mean	Std Dev	Mean	Std Dev	Mean	Std Dev	Mean	Std Dev
Fall 2017-2018	2	2											
Fall 2017-2018	3	73	191.2	9.3	191	191.3	12.7	191.5	11.5	191.1	10.9	191.2	9.9

Growth: Math K-2 CCSS 2010 V2

Common Core State Standards Mathematics: 2010

Goal Performance

Term	Grade	Student Count	Mean RIT	Std Dev	Median	Operations and Algebraic Thinking		Number and Operations		Measurement and Data		Geometry	
						Mean	Std Dev	Mean	Std Dev	Mean	Std Dev	Mean	Std Dev
Fall 2017-2018	K	90	139.4	10.5	138	138.4	10.7	138.5	12.6	141.1	13.3	139.6	13.0
Spring 2016-2017	K	53	165.1	13.3	166	169.0	16.5	164.8	14.1	163.9	13.5	162.5	15.5
Winter 2016-2017	K	53	150.4	13.7	150	151.9	15.6	149.1	14.9	151.2	13.6	149.0	16.5
Fall 2016-2017	K	50	140.0	12.2	141	138.2	13.0	140.4	13.2	142.1	13.4	139.7	16.1
Spring 2015-2016	K	118	159.6	13.0	160	161.5	15.3	159.1	13.6	158.3	14.0	159.6	15.7
Winter 2015-2016	K	120	150.9	12.4	152	147.9	15.6	150.1	13.9	151.9	13.9	153.7	14.8
Fall 2015-2016	K	118	140.0	11.4	138	137.1	14.7	139.7	13.2	140.8	11.6	142.7	13.4
Fall 2017-2018	1	91	162.1	13.4	162	168.1	15.9	159.8	14.7	161.5	14.5	158.6	15.4
Spring 2016-2017	1	111	184.9	13.8	183	187.6	14.9	185.4	14.3	181.5	13.6	184.5	18.1
Winter 2016-2017	1	111	172.1	11.6	173	176.6	13.7	171.1	13.3	169.3	12.8	171.2	13.7
Fall 2016-2017	1	111	162.8	11.7	163	164.5	13.8	164.2	14.8	161.5	12.1	161.1	13.8
Spring 2015-2016	1	90	170.4	10.2	171	172.3	12.6	167.7	11.4	170.2	10.8	171.2	13.4
Winter 2015-2016	1	90	161.6	9.8	162	164.4	11.6	159.9	11.3	160.0	11.5	161.9	13.7
Fall 2015-2016	1	90	151.4	10.6	153	153.4	11.8	151.3	11.7	149.8	12.5	151.2	14.6
Fall 2017-2018	2	115	188.2	13.6	188	189.1	14.3	192.5	14.4	186.3	14.9	184.9	17.3
Spring 2016-2017	2	85	202.0	17.0	204	204.3	19.2	202.4	17.4	198.8	18.6	202.2	19.4
Winter 2016-2017	2	85	183.0	12.1	182	188.7	14.8	187.5	15.1	178.5	11.4	176.9	14.5
Fall 2016-2017	2	87	173.9	10.1	174	176.6	10.9	175.8	12.8	171.5	10.9	171.4	13.2

Explanatory Notes

Due to statistical unreliability, summary data for groups of less than 10 are not shown.
 A goal mean shown with **bold italic** represents performance that might be an area of concern. A goal mean shown with **bold underline** represents an area of relatively strong performance.

Absentee Report Summary as of March 15, 2018

Attachment B

Number of school days: 114 (not all students have been enrolled 114 days)

Number of students: 371

Chronic absentees (>10%): 67 students (6 to 29 days)

Pct. chronic absentee: **18.0%**

(One absence per month makes an extraordinary difference. 16 students are in the "green" zone—10% absence rate; 14 students are in the "yellow" zone—9% to 10.0% absence rate.)

Perfect attendance: 37 students

Pct. perfect attendance: **10.0%**

10+ days late-arrival/early-dismissals: 78 students; several students with 20+ days, and one student at 55 days.

Pct. (>10) late-arrival/early-dismissals: **21.0%**

Chronic Absentees by Grade:

Kindergarten: **23** students out of 90 (25.6%)

1st-grade: **16** students out of 90 (17.8%)

2nd-grade: **15** students out of 89 (16.9%)

3rd-grade: **11** students out of 74 (14.9%)